

PENN TOWNSHIP

Each township has six files containing six sections in each, and one file containing all 36 sections.

Penn01to06.pdf

Penn07to12.pdf

Penn13to18.pdf

Penn19to24.pdf

Penn25to30.pdf

Penn31to36.pdf

PennAll36.pdf

The points are listed starting with the point above the SE corner and continuing in a counter-clockwise rotation around the section. This normally begins with the East point, Northeast, then North, but may also include Witness Corners, and/or Meander Corners.

Definitions

Witness Corner: A witness corner “stands in” when the true corner cannot be monumented or occupied because of difficult terrain or obstruction of the corner sight. The witness corner must be on the section line and is usually 5 or 10 chains away from the true corner.

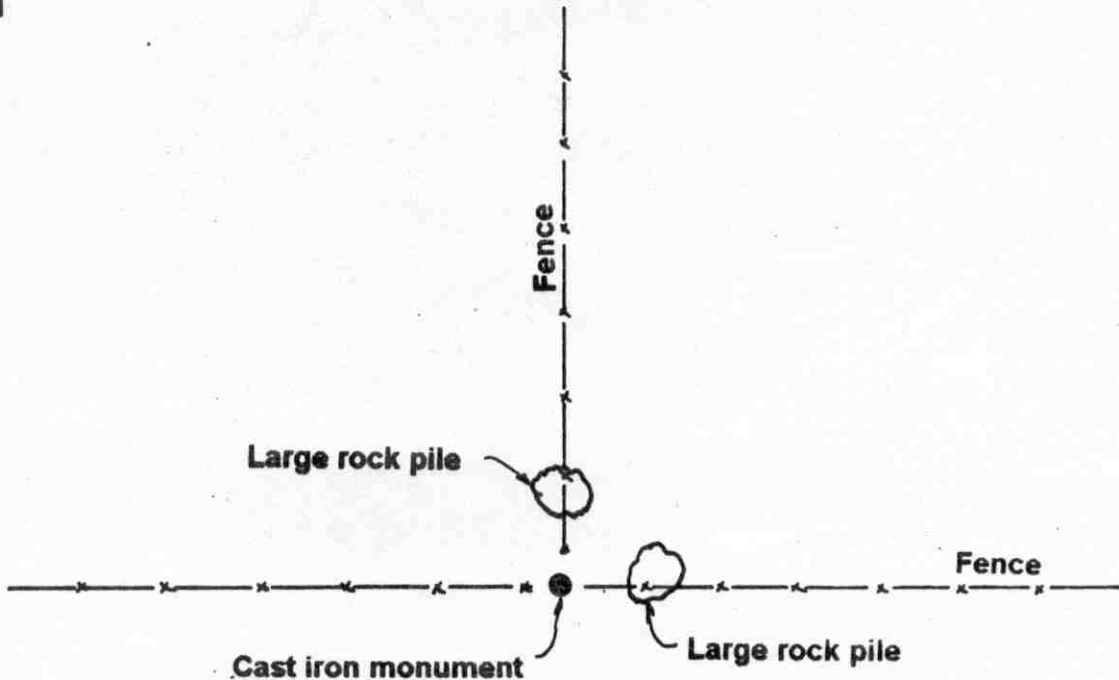
Meander Corner: The intersection of a township, range, or section line and the banks of a navigable stream or meandering body of water.

Certificate of Location of Government Corner

EAST QUARTER corner, Section 13, Township 114 North, Range 29 West

SKETCH OF REFERENCE TIES (NO SCALE)

SECTION 13, T.114 N., R. 29 W.



SECTION 18, T.114 N., R. 28 W.

Statement of evidence relative to this corner location on sheet 2

I hereby certify that this document was prepared by me or under my direct supervision.

Willard Pellinen
Willard Pellinen
McLeod County Surveyor
License No. 9626.

Date Sept. 11, 1995

OFFICE OF THE COUNTY RECORDER MCLEOD COUNTY, MINNESOTA

I hereby certify that this document was filed in this office at 9 o'clock A. M. on the 14th day of Sept 19 95.

Carmen Ostlie Mulder, County Recorder

By _____, Deputy.

Document No. 268025

Certificate of Location of Government Corner

East Quarter Corner, Section 13, Township 114 North, Range 29 West

1855. John Ryan of the General Land Office established this corner. He set a post, deposited charcoal, dug pits and trench, built mound and planted osage orange seeds at the corners of the mound.

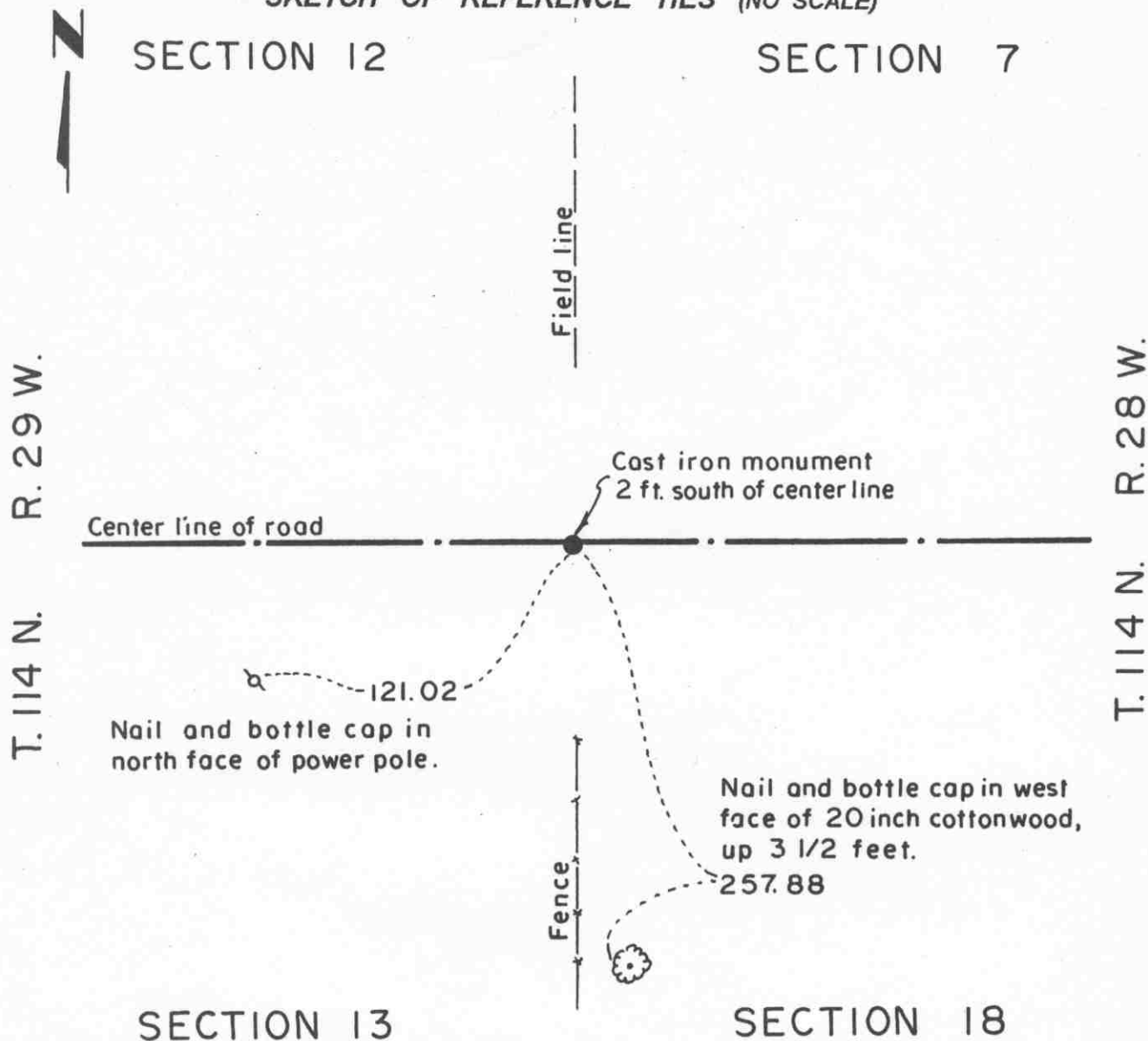
1973. Delbert Rieke, Sibley County Surveyor, talked with Virgil Frauendienst, who lived in the Southwest Quarter of the Southwest Quarter of Section 18. Mr. Frauendienst said a survey was done to split up the farm and the quarter corner was reestablished and a fence post set in concrete was placed in the corner. Rieke set a cast iron monument beside the post. This was at the intersection of fences east, west and 1 foot west of fence to north.

1973. Dickman Knutson, McLeod County Surveyor, accepted the fence post set in concrete as marking the government corner.

Certificate of Location of Government Corner

NORTHEAST corner, Section 13, Township 114 North, Range 29 West

SKETCH OF REFERENCE TIES (NO SCALE)



Statement of evidence relative to this corner location on sheet 2

I hereby certify that this document was prepared by me or under my direct supervision.

Willard Pellinen

Willard Pellinen
McLeod County Surveyor
License No. 9626.

Date Nov. 10, 1995

OFFICE OF THE COUNTY RECORDER
MCLEOD COUNTY, MINNESOTA

I hereby certify that this document was filed in this office at 9 o'clock A. M. on the 15th day of November 19 95.

(Carmen) Osthie Mulder, County Recorder

By _____, Deputy.

Document No. 269352

Certificate of Location of Government Corner
Northeast Corner, Section 13, Township 114 North, Range 29 West

1855. John Ryan of the General Land Office established this corner. He set a post, deposited charcoal, dug pits and trench, built mound and planted osage orange seeds at the corners of the mound.

1973. Delbert Rieke, Sibley County Surveyor, excavated for the corner in the center line of the east-west road, fences north and south. Down 6 feet they found a stone with parts of old stake. This was within 1 foot of 1922 distances by E. L. Higgins to the south quarter corner and to the west quarter corner of Section 7, Township 114, Range 28. Rieke set a cast iron monument at the corner.

February 22, 1995. We found the monument in good condition down 8 inches below the surface of the gravel road and took new reference ties.

Certificate of Location of Government Corner

North Quarter corner, Section 13, Township 114 North, Range 29 West

SKETCH OF REFERENCE TIES (NO SCALE)



SECTION 12

Punch hole on top of
east end of C.M.P.

152.66

Cast iron monument

43.00

center line of road

iron pipe

146.54

Nail and bottle cap in
north face of power pole.

164.29

Nail and bottle cap in
north face of power pole.

SECTION 13

Statement of evidence relative to this corner location on sheet 2

I hereby certify that this document
was prepared by me or under my
direct supervision.

Willard Pellinen

Willard Pellinen
McLeod County Surveyor
License No. 9626.

Date Nov. 10, 1995

OFFICE OF THE COUNTY RECORDER
MCLEOD COUNTY, MINNESOTA

I hereby certify that this document was filed in this office at 9
o'clock A. M. on the 15th day of November
19 95.

Carmen O'Brien, County Recorder

By _____, Deputy.

Document No. 269353

Certificate of Location of Government Corner
North Quarter Corner, Section 13, Township 114 North, Range 29 West

July, 1855. A. H. Runyon of the General Land Office established this corner. He set a post, drove a charred stake, raised a mound of earth with trench and pits and planted maclura seeds at the southeast corner of the mound.

June 9, 1981. We excavated for the corner on the center line of the east-west road, half way between the section corners. (John Tupa from Hutchinson with a backhoe) Down 3 feet below the surface of the gravel road we found a very rotted wood stake. Stake was about 3 inches square on top and about 1 foot long, tapered to a sharp point at the bottom. It was too rotted to pick up or measure. We believe this could have been the original government corner. We took available reference ties.

June 23, 1981. We set an iron pipe at the corner and took additional ties.

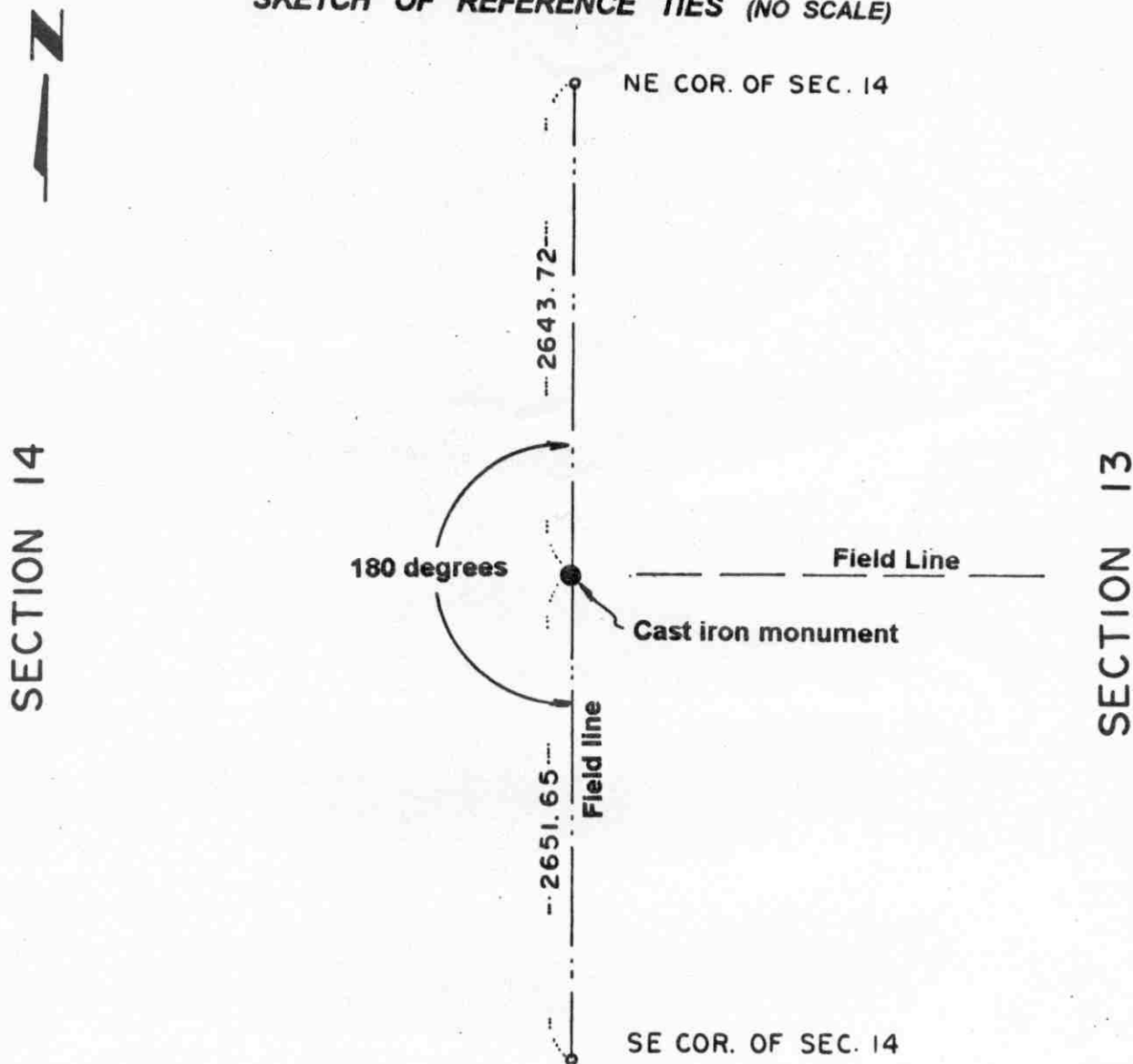
July 10, 1981. We set a McLeod County cast iron monument. This is within 2 feet of being on a split between the section corners.

February 22, 1995. We checked the reference ties.

Certificate of Location of Government Corner

EAST QUARTER corner, Section 14, Township 114 North, Range 29 West

SKETCH OF REFERENCE TIES (NO SCALE)



Statement of evidence relative to this corner location on sheet 2

I hereby certify that this document was prepared by me or under my direct supervision.

Willard Pellinen

Willard Pellinen
McLeod County Surveyor
License No. 9626.

Date Sept. 11, 1995

OFFICE OF THE COUNTY RECORDER MCLEOD COUNTY, MINNESOTA

I hereby certify that this document was filed in this office at 9 o'clock A M. on the 14th day of Sept 19 95.

Carmen Ostlie County Recorder

By _____, Deputy.

Document No. 268026

Certificate of Location of Government Corner

East Quarter Corner, Section 14, Township 114 North, Range 29 West

July, 1855. A. H. Runyon of the General Land Office established this corner. He set a post, drove a charred stake, raised a mound of earth with trench and pits and planted osage orange seeds at the southeast corner of the mound.

January 5, 1983. We measured the east line of Section 14 and set a temporary east quarter corner on a straight line between the northeast and southeast corners of Section 14 on the intersection with a field division to the east. This also is on a field division to the south.

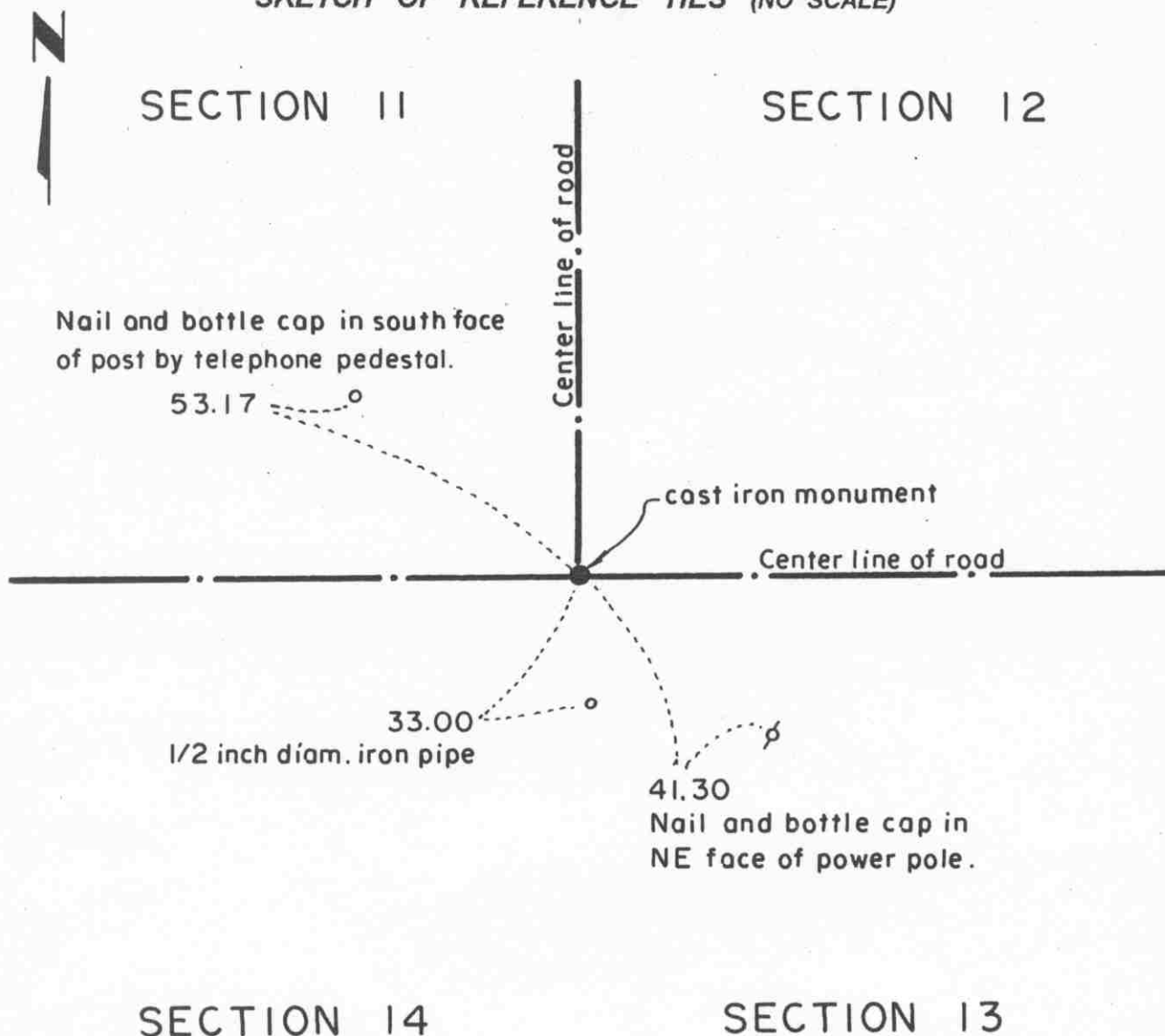
January 17, 1983. Mr. Vernon Polzin, 52 years old and had lived in the Southwest Quarter of Section 13 all his life stated the intersection of the field lines have been accepted by adjacent property owners as being the quarter corner. Mr. Willmer Alsleben, 53 years old and had lived in the East Half of Section 14 all his life agrees with Mr. Polzin.

April 7, 1983. We set a McLeod County cast iron monument at the corner. This corner is 3.96 feet north of a split between the section corners.

Certificate of Location of Government Corner

Northeast corner, Section 14, Township 114 North, Range 29 West

SKETCH OF REFERENCE TIES (NO SCALE)



Statement of evidence relative to this corner location on sheet 2

I hereby certify that this document was prepared by me or under my direct supervision.

Willard Pellinen

Willard Pellinen
McLeod County Surveyor
License No. 9626.

Date Nov. 10, 1995

OFFICE OF THE COUNTY RECORDER MCLEOD COUNTY, MINNESOTA

I hereby certify that this document was filed in this office at 9 o'clock A. M. on the 15th day of November 19 95.

Armenia Dottie Mulder, County Recorder

By _____, Deputy.

Document No. 269354

Certificate of Location of Government Corner
Northeast Corner, Section 14, Township 114 North, Range 29 West

July, 1855. A. H. Runyon of the General Land Office established this corner. He set a post, drove a charred stake, raised a mound of earth with trench and pits and planted maclura seeds at the southeast corner of the mound.

April 3, 1978. Dickman Knutson, county surveyor, dug for the corner. (John Tupa from Hutchinson with a backhoe) They dug at the center line intersection of roads east, west and north. Adjacent land owners have all accepted the center line intersection as being the correct location of the corner. Knutson found a large rock and an iron stake down 2 feet below the surface of the road. Knutson tied off the found iron and set a half inch diameter iron pipe over it at the surface of the road.

This is within a half foot of 1899 distance by E. L. Higgins, county surveyor, to the north quarter corner of the section.

July 24, 1980. We replaced the iron pipe with a McLeod County cast iron monument and took new ties.

February 22, 1995. We found the monument in good condition down 8 inches below the surface of the gravel road and took new reference ties.

Certificate of Location of Government Corner

NORTH QUARTER corner, Section 14, Township 114 North, Range 29 West

SKETCH OF REFERENCE TIES (NO SCALE)



SECTION 11

Nail and bottle cap in
north face of power pole.

49.47

Cast iron monument

Center line of road

33.08
Punch hole in
12 inch steel
culvert.

6

33.00
1/2 inch iron pipe
along N-S 1/4 line

Field line

SECTION 14

Statement of evidence relative to this corner location on sheet 2

I hereby certify that this document
was prepared by me or under my
direct supervision.

Willard Pellinen

Willard Pellinen
McLeod County Surveyor
License No. 9626.

Date Nov. 10, 1995

OFFICE OF THE COUNTY RECORDER
MCLEOD COUNTY, MINNESOTA

I hereby certify that this document was filed in this office at 9
o'clock A.M. on the 15th day of November
19 95.

Carmen Ostlie Mulder County Recorder

By _____, Deputy.

Document No. _____

269355

Certificate of Location of Government Corner
North Quarter Corner, Section 14, Township 114 North, Range 29 West

July, 1855. A. H. Runyon of the General Land Office established this corner. He set a post, drove a charred stake, raised a mound of earth with trench and pits and planted maclura seeds at the southeast corner of the mound.

April 3, 1978. Dickman Knutson, county surveyor, excavated for the corner. Down 2 1/2 feet below the surface of the east-west road, he found a 1 1/2 inch diameter iron pipe. This was within a half foot of 1899 distance by E. L. Higgins, county surveyor, to the northeast corner of Section 14.

Knutson took reference ties to the found iron pipe and set a half inch diameter pipe at the surface of the road.

July 24, 1980. We replaced the iron pipe with a McLeod County cast iron monument and took new reference ties.

February 22, 1995. We found the monument in good condition down 8 inches below the surface of the gravel road and took new reference ties.

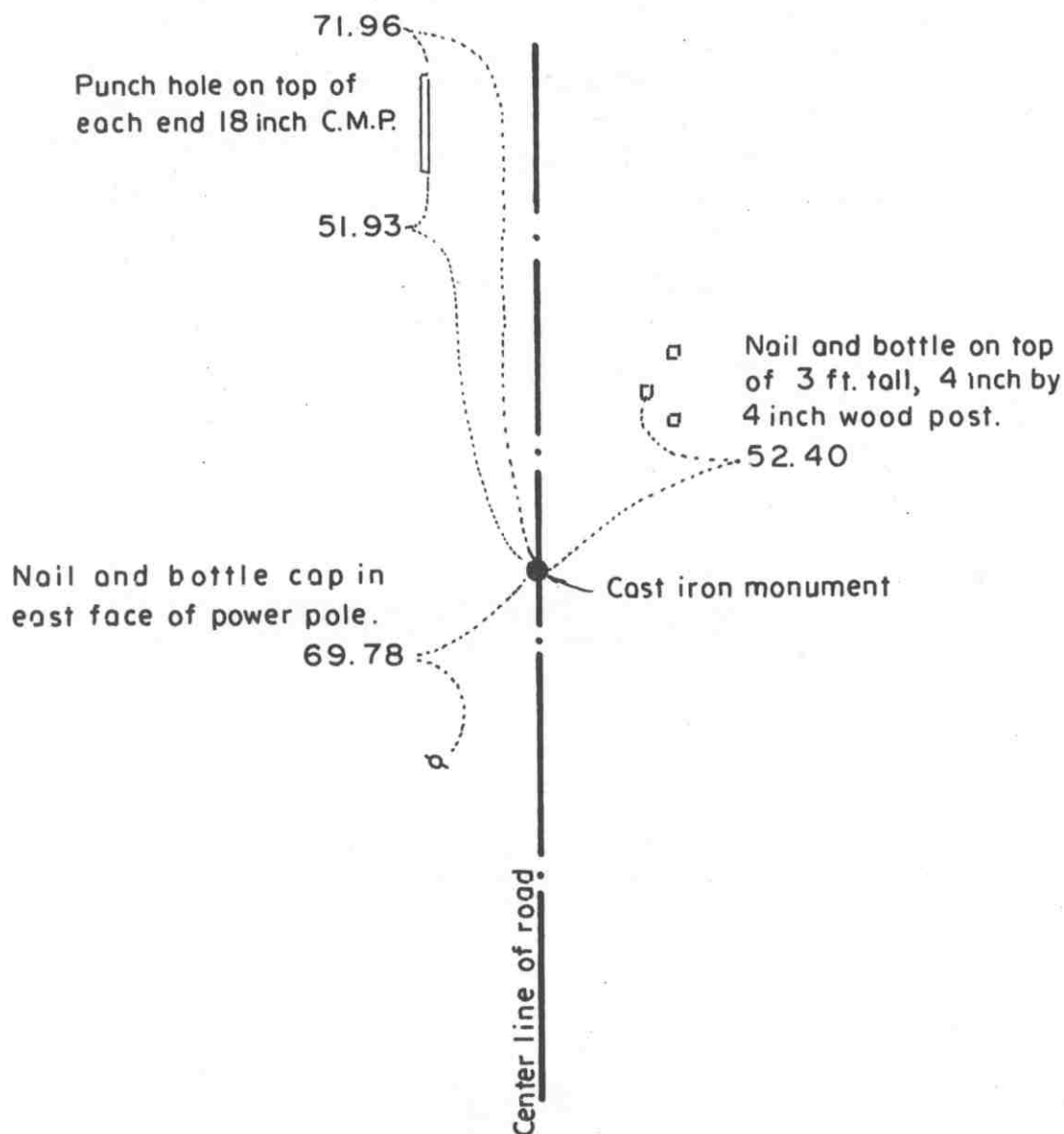
Certificate of Location of Government Corner

East Quarter corner, Section 15, Township 114 North, Range 29 West

SKETCH OF REFERENCE TIES (NO SCALE)

SECTION 15

SECTION 14



Statement of evidence relative to this corner location on sheet 2

I hereby certify that this document was prepared by me or under my direct supervision.

Willard Pellinen
Willard Pellinen
McLeod County Surveyor
License No. 9626.

Date Nov. 10, 1995

OFFICE OF THE COUNTY RECORDER MCLEOD COUNTY, MINNESOTA

I hereby certify that this document was filed in this office at 9 o'clock A. M. on the 15th day of November 19 95.

Carmen Ostlie-Mulder, County Recorder

By _____, Deputy.

Document No. 269356

Certificate of Location of Government Corner

East Quarter Corner, Section 15, Township 114 North, Range 29 West

July, 1855. A. H. Runyon of the General Land Office established this corner. He set a post, drove a charred stake, raised a mound of earth with trench and pits and planted maclura seeds at the southeast corner of the mound.

1978. No testimony or property lines running east or west to help locate this corner. We dug at the center of the north-south road half way between the section corners but found no evidence of the government corner.

January 5, 1983. We set an iron pipe on a straight line and half way between the northeast and southeast corners of Section 15. (2645.39 feet each way) We ran the east-west quarter line of Section 14 to check occupation near the center of Section 14. Quarter line hits fence corner, fences south and west.

March 25, 1983. We set a cast iron monument at the corner, with a 1/2 inch diameter iron pipe below the monument, and took reference ties.

February 22, 1995. We checked the reference ties.

NORTHEAST corner, Section 15, Township 114 North, Range 29 West

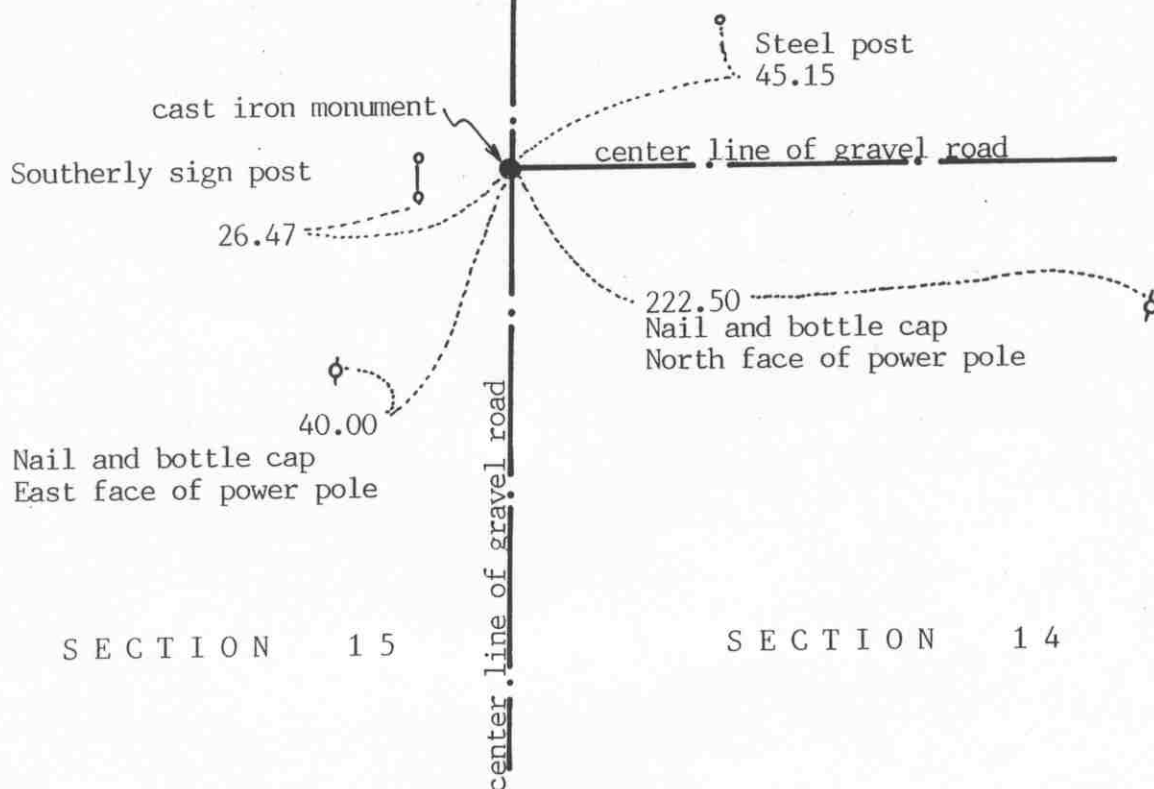
Certificate of Location of Government Corner

SKETCH OF REFERENCE TIES
(NO SCALE)



SECTION 10

SECTION 11



Statement of evidence relative to this corner location on sheet 2

I hereby certify that this document was prepared by me or under my direct supervision.

Willard Pellinen

Willard Pellinen
McLeod County Surveyor
License No. 9626

Date Nov. 2, 1992

OFFICE OF THE COUNTY RECORDER
MCLEOD COUNTY, MINNESOTA.

I hereby certify that this document was filed in this office at 3 o'clock P.M. on the 17th day of November, 1992.

Carman Otis Mulder, County Recorder

By _____, Deputy

Document No. 248895

NORTHEAST corner, Section 15, Township 114 North, Range 29 West*Certificate of Location of Government Corner*

July, 1855. A. W. Runyon of the General Land Office established this corner. He "set post, drove charred stake, raised mound of earth with trench and pits as per instructions and planted Maclura seeds at the southeast corner of the mound."

December 2, 1899. Field notes by E. L. Higgins, county surveyor, show a distance of 2640 feet to the west quarter corner of Section 11 and 2646.5 feet to the south quarter corner of Section 11.

June 9, 1981. We dug for the corner, John Tupa from Hutchinson with a backhoe. We found a 1 foot long $\frac{1}{2}$ inch diameter iron pin down 1 foot below the road surface. Down 2 feet below the surface we found a 12 inch diameter stone, directly below the iron pin. Down 3 feet below the surface we found a $1\frac{1}{2}$ inch diameter iron pipe, directly below the iron pin and the stone. This was on the center line intersection of roads north south and east. Adjoining land owners all agree this is the correct location of the section corner. Our measured distances to the west and south quarter corners of Section 11 are within $\frac{1}{2}$ foot of 1899 distances by Higgins.

July 10, 1981. We set a McLeod County cast iron monument at the corner.

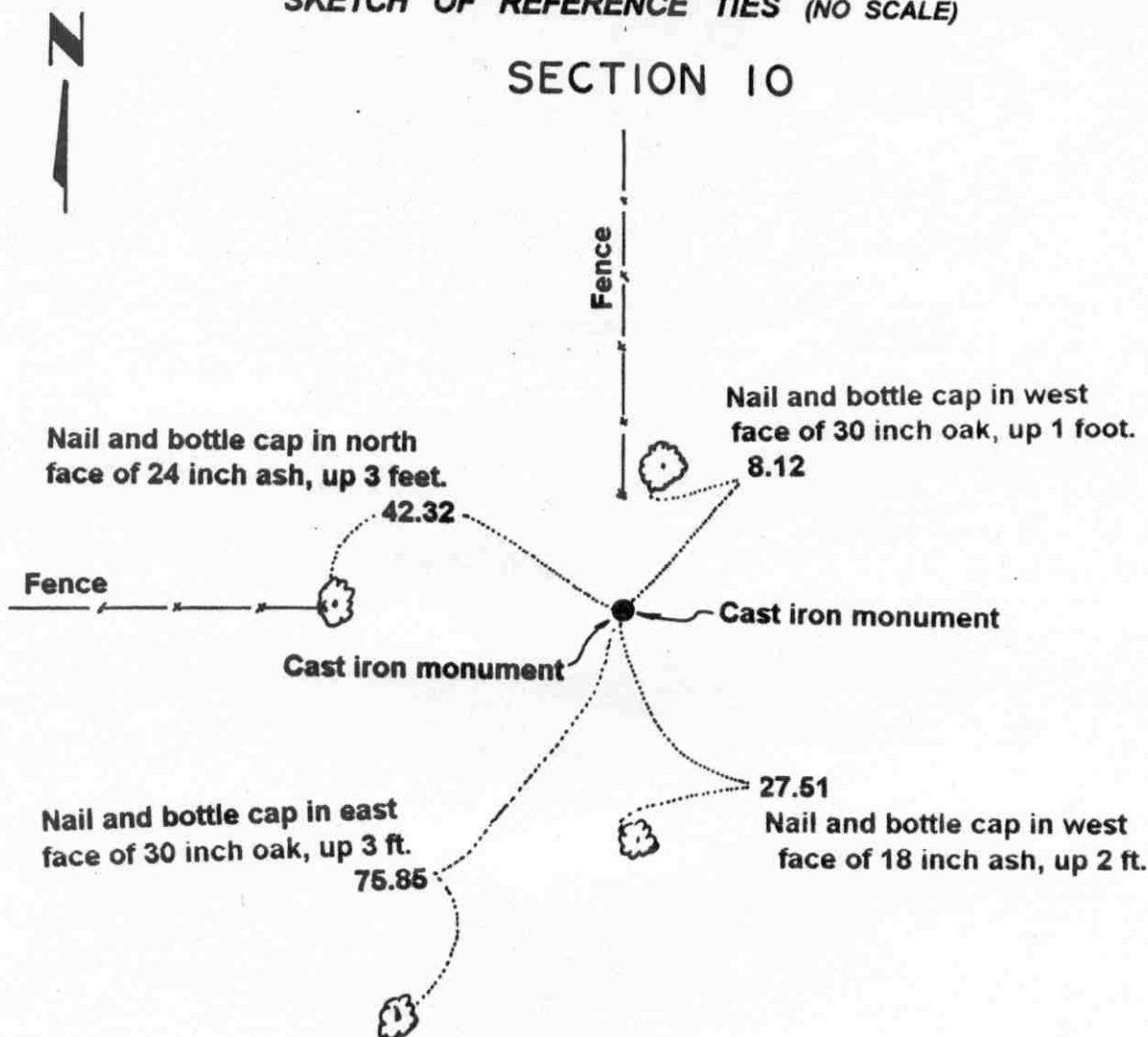
October 30, 1992. We found the cast iron monument in good condition 10 inches below the surface and checked the ties.

Certificate of Location of Government Corner

NORTH QUARTER corner, Section 15, Township 114 North, Range 29 West

SKETCH OF REFERENCE TIES (NO SCALE)

SECTION 10



SECTION 15

Statement of evidence relative to this corner location on sheet 2

I hereby certify that this document was prepared by me or under my direct supervision.

Willard Pellinen
Willard Pellinen
McLeod County Surveyor
License No. 9626.

Date Sept. 11, 1995

OFFICE OF THE COUNTY RECORDER
MCLEOD COUNTY, MINNESOTA

I hereby certify that this document was filed in this office at 9 o'clock A. M. on the 14th day of Sept 19 95.

Carmen Estlie Mulder, County Recorder

By _____, Deputy.

Document No. 268027

Certificate of Location of Government Corner

North Quarter Corner, Section 15, Township 114 North, Range 29 West

July, 1855. A. H. Runyon of the General Land Office established this corner. He set a post and marked a 7 inch oak and a 22 inch oak for bearing trees.

July 8, 1982. Willmar Harbarth, who had lived in the Southeast Quarter of Section 10 since 1959, didn't know of any corner in place but said the fence along his west line is along the north-south quarter line of Section 10. Clarence Frauendienst, 69 years old and lived in the Southwest Quarter of Section 10 since 1943, said remains of old fence along his south line should be along the section line. He said there is a "marker" at the quarter corner.

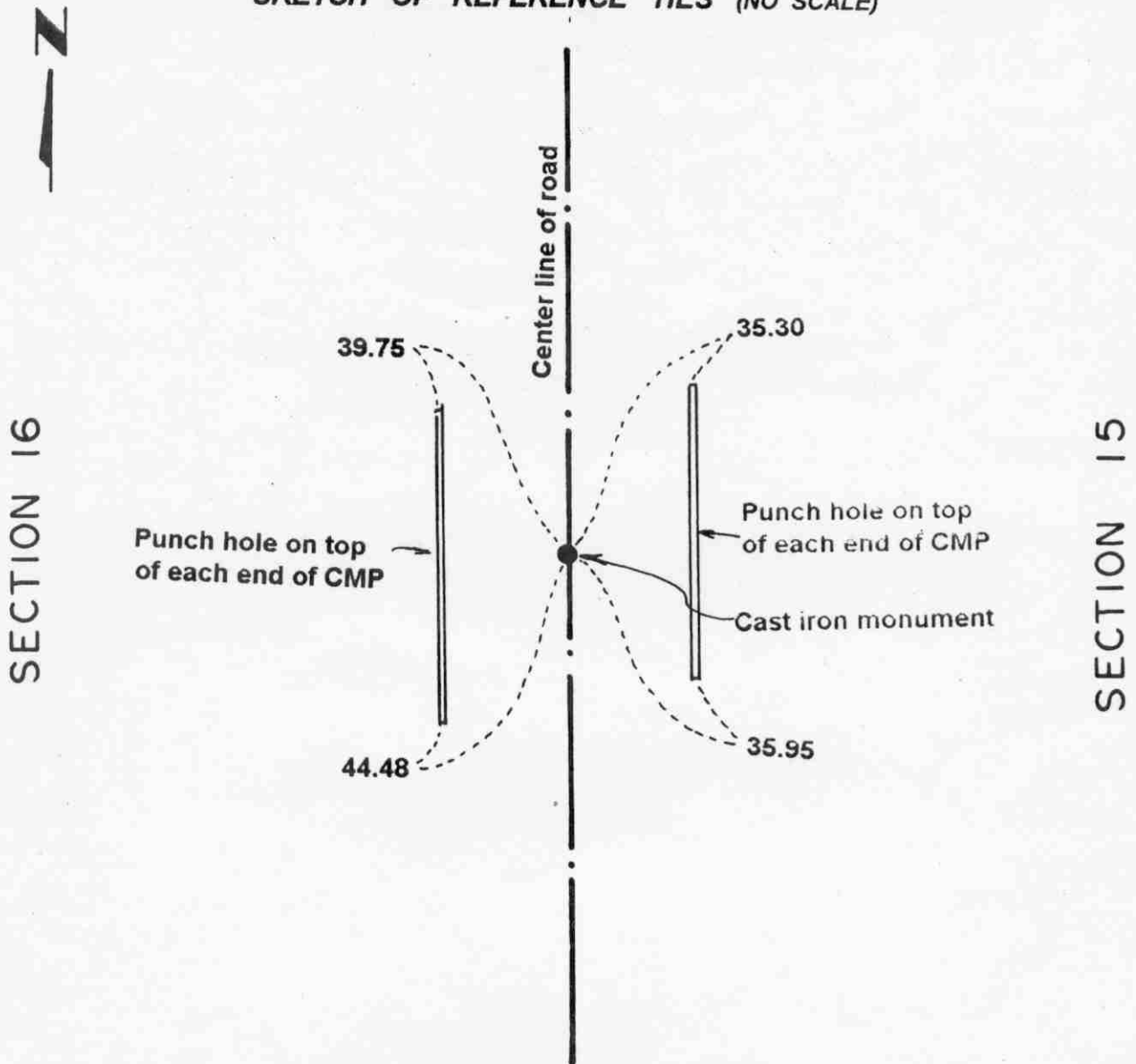
Muly 9, 1982. We found a 3 inch diameter iron pipe at the intersection of the fences. Fences north and west.

October 22, 1982. We dug and down about 10 inches we found a rotted wood stake on the north side of the iron pipe. We took reference ties before digging. Iron pipe was 2 1/2 feet long. Wood stake was about 1 foot long, sharpened at the bottom. We saved the wood stake which was very rotten and broke into 3 pieces. We believe this wood stake could be the original government corner. We set a McLeod County cast iron monument at the location of the wood stake.

Certificate of Location of Government Corner

EAST QUARTER corner, Section 16, Township 114 North, Range 29 West

SKETCH OF REFERENCE TIES (NO SCALE)



Statement of evidence relative to this corner location on sheet 2

I hereby certify that this document was prepared by me or under my direct supervision.

Willard Pellinen
Willard Pellinen
McLeod County Surveyor
License No. 9626.

Date Nov. 6, 1995.

OFFICE OF THE COUNTY RECORDER **269310**
MCLEOD COUNTY, MINNESOTA

I hereby certify that this document was filed in this office at 9 o'clock A. M. on the 14th day of November 19 95.

Carmen Dotlie Mulder, County Recorder

By _____, Deputy.

Document No. _____

Certificate of Location of Government Corner
East Quarter Corner, Section 16, Township 114 North, Range 29 West

July, 1855. A. H. Runyon of the General Land Office established this corner. He set a post, drove a charred stake, raised a mound of earth with trench and pits and planted maclura seeds at the southeast corner of the mound.

No testimony to help locate this corner and no property lines running east or west from this corner. No old survey information.

June, 1981. We dug for the corner in the center line of the north-south road, half way between the section corners but found no evidence of the government corner.

July 8, 1982. We set an iron pipe on line and split between the section corners and took available reference ties. We measured 2638.2 feet to the northeast and to the southeast corner of Section 16.

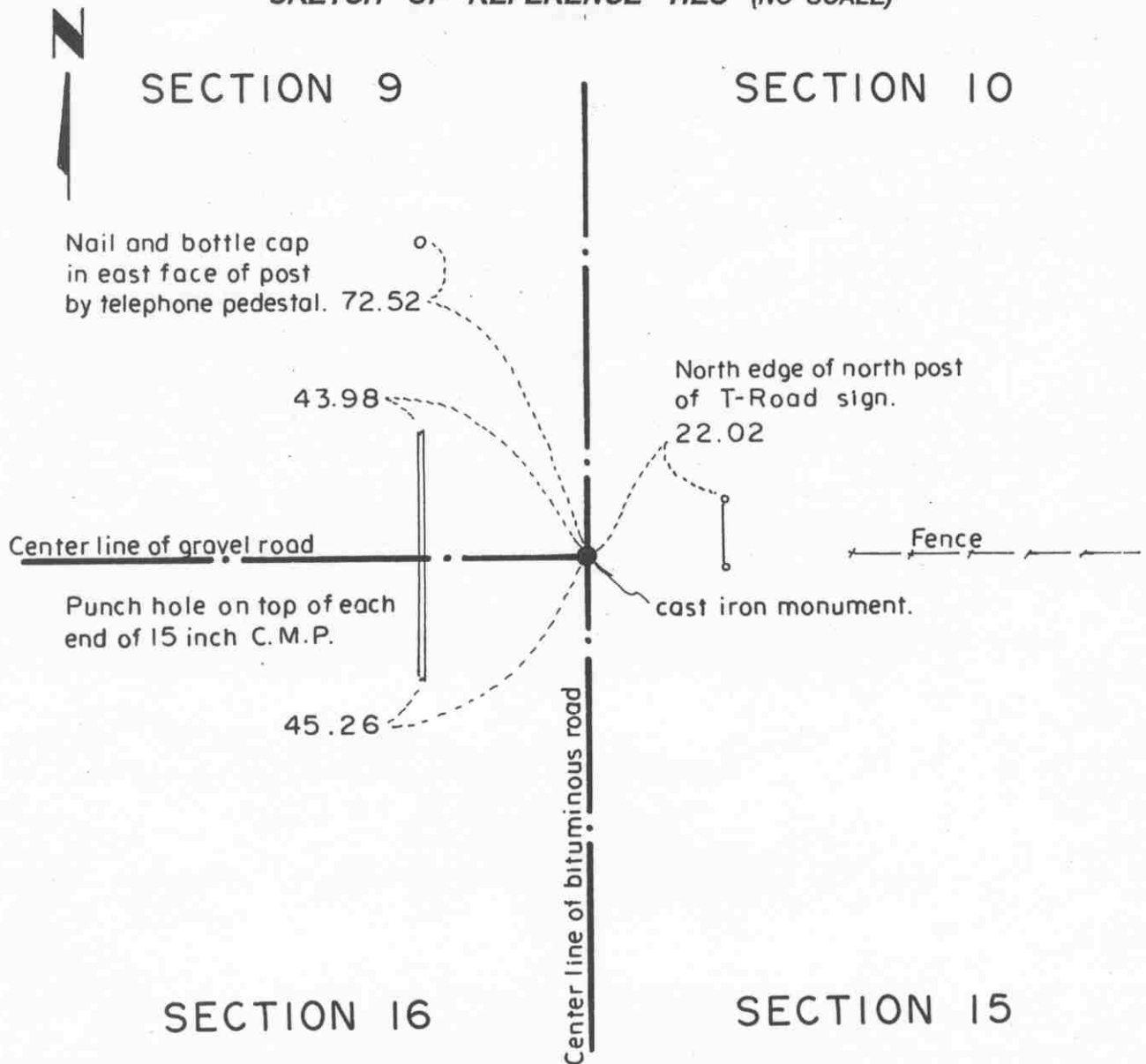
July 13, 1982. We set a McLeod County cast iron monument at the corner with a 1/2 inch diameter iron pipe below the monument.

April 28, 1995. We checked the reference ties.

Certificate of Location of Government Corner

Northeast corner, Section 16, Township 114 North, Range 29 West

SKETCH OF REFERENCE TIES (NO SCALE)



Statement of evidence relative to this corner location on sheet 2

I hereby certify that this document was prepared by me or under my direct supervision.

Willard Pellinen

Willard Pellinen
McLeod County Surveyor
License No. 9626.

Date Nov. 10, 1995

OFFICE OF THE COUNTY RECORDER MCLEOD COUNTY, MINNESOTA

I hereby certify that this document was filed in this office at 9 o'clock A.M. on the 15th day of November 19 95.

Carmen Ostlie Mulder, County Recorder

By _____, Deputy.

Document No. 269357

Certificate of Location of Government Corner

Northeast Corner, Section 16, Township 114 North, Range 29 West

July, 1855. A. H. Runyon of the General Land Office established this corner. He set a post, drove a charred stake, raised a mound of earth with trench and pits and planted maclura seeds at the southeast corner of the mound.

1898. E. L. Higgins, county surveyor, found a stone at the corner. He measured 2620 feet to the north quarter corner of Section 16 and 2650 feet to the east quarter corner of Section 9.

Adjacent land owners have accepted the center line intersection of the roads as being the section corner.

1970. Dickman Knutson, county surveyor, excavated for the corner. (John Tupa from Hutchinson, with a backhoe) They found an iron pipe at the center line intersection of the roads. (Roads north, south and west) Below the first iron pipe, they found an older iron pipe, same location. They took reference ties.

August 19, 1980. We set an iron pipe using the 1970 reference ties.

July 18, 1982. We replaced the iron pipe with a McLeod County cast iron monument and took new ties. This corner is within 1/2 foot of being the same distance to the northwest corner of Section 16 as Higgins had in 1898.

February 22, 1995. We found the monument in good condition down 3 inches below the surface of the bituminous road and took new reference ties.

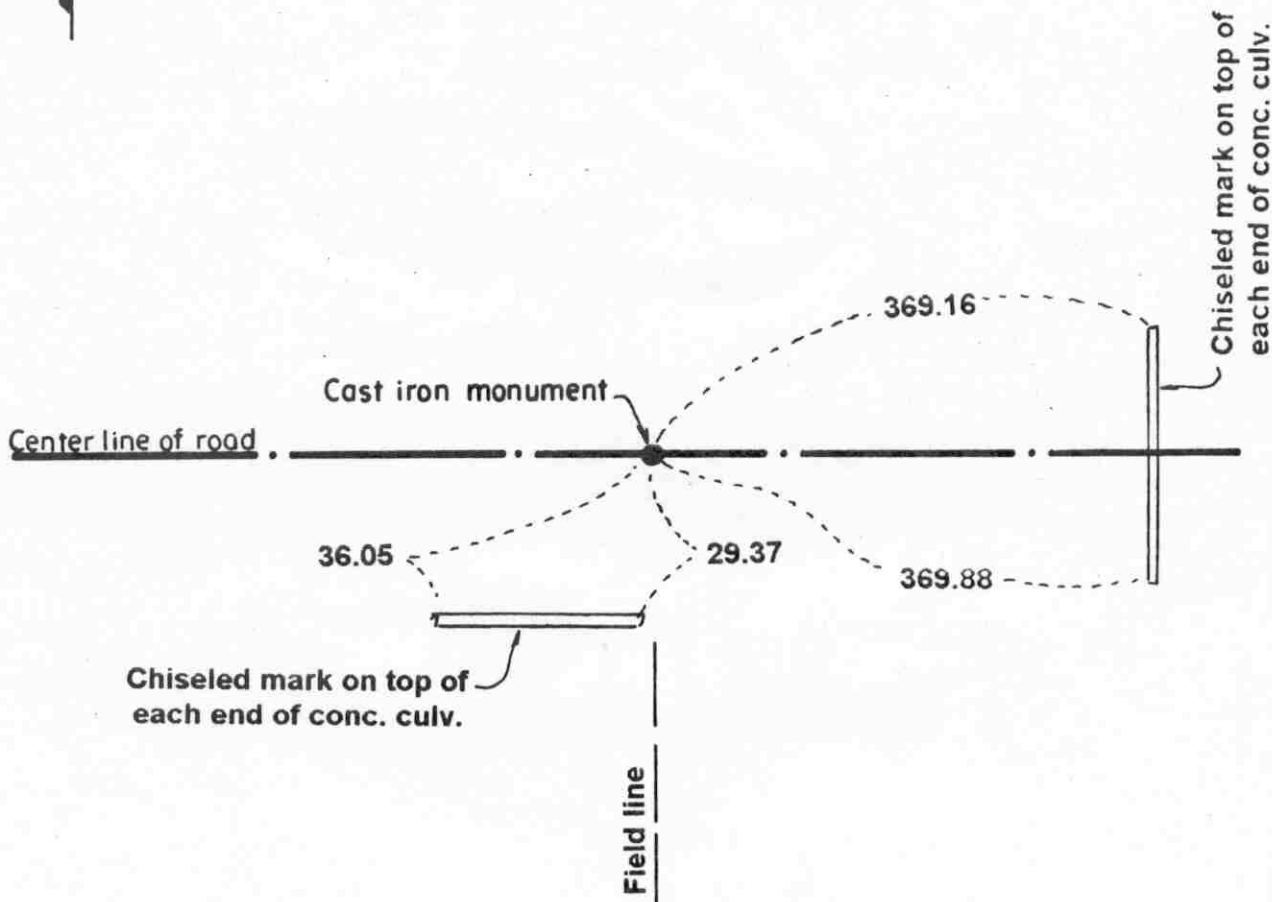
Certificate of Location of Government Corner

NORTH QUARTER corner, Section 16, Township 114 North, Range 29 West

SKETCH OF REFERENCE TIES (NO SCALE)



SECTION 9



SECTION 16

Statement of evidence relative to this corner location on sheet 2

I hereby certify that this document was prepared by me or under my direct supervision.

Willard Pellinen
Willard Pellinen
McLeod County Surveyor
License No. 9626.

Date Nov. 6, 1995.

OFFICE OF THE COUNTY RECORDER
MCLEOD COUNTY, MINNESOTA

269311

I hereby certify that this document was filed in this office at 9 o'clock A. M. on the 14th day of November 19 95.

Carmen Potliorfelder, County Recorder

By _____, Deputy.

Document No. _____

Certificate of Location of Government Corner

North Quarter Corner, Section 16, Township 114 North, Range 29 West

July, 1855. A. H. Runyon of the General Land Office established this corner. He set a post, drove a charred stake, raised a mound of earth with trench and pits and planted maclura seeds at the southeast corner of the mound.

1898. E. L. Higgins, county surveyor, found a post at the corner.

March 28, 1978. Dickman Knutson, county surveyor, measured the north line of Section 16 and set a temporary quarter corner in the center of the east-west road in line with a field division to the south. This location has been accepted by adjacent land owners as the quarter corner.

June 10, 1981. We excavated for the corner, John Tupa from Hutchinson with a backhoe. Down 2 feet below the road surface we found a wood stake and took available reference ties. Our distances to the northeast and northwest corners of Section 16 is very near to being the same as Higgins had in 1998.

July 10, 1981. We set a McLeod County cast iron monument at the corner and took additional reference ties.

June 12, 1984. We found the monument in good condition and took additional ties to help reset the corner after road construction.

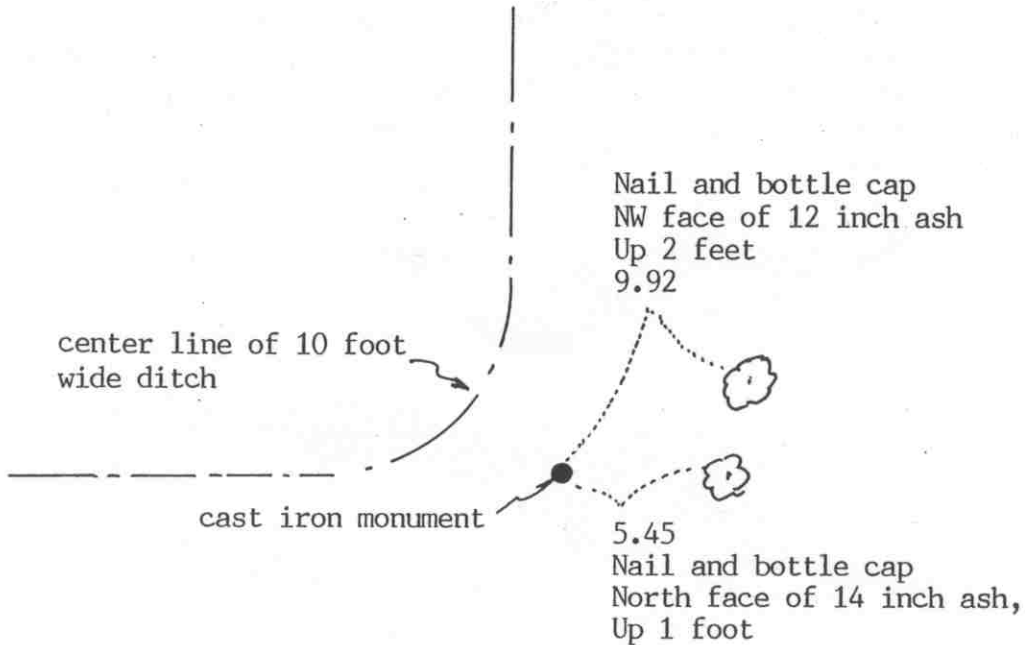
April 28, 1995. We checked the reference ties.

EAST QUARTER corner, Section 17, Township 114 North, Range 29 West

Certificate of Location of Government Corner

SKETCH OF REFERENCE TIES

(NO SCALE)



Statement of evidence relative to this corner location on sheet 2

I hereby certify that this document was prepared by me or under my direct supervision.

Willard Pellinen

Willard Pellinen
McLeod County Surveyor
License No. 9626

Date August 16, 1993

OFFICE OF THE COUNTY RECORDER
MCLEOD COUNTY, MINNESOTA.

I hereby certify that this document was filed in this office at 9 o'clock A.M. on the 18th day of August, 19 93.

Carmen (Belie) Gulder, County Recorder

By _____, Deputy

Document No. 254224

EAST QUARTER corner, Section 17, Township 114 North, Range 29 West*Certificate of Location of Government Corner*

July, 1855. A. Runyon of the General Land Office established this corner. He set a post, drove a charred stake and raised mound of earth with trench and pits.

August, 1971. DNR talked with Gilbert Zeize, who lived in the Southeast Quarter of Section 8. He testified that the corner is at the fence intersection, fences north, south and west.

1976. DNR talked with Leonard Winterfeldt, 70 years old, and had lived in Section 16 most of his life. He agreed that the corner is at the fence intersection. DNR set a 3/8 inch iron rod at the corner.

August 13, 1977. Dickman Knutson, McLeod County Surveyor, replaced the iron rod with a McLeod County cast iron monument.

June 28, 1993. We found the monument in good condition but no old ties remaining. We took new available ties.

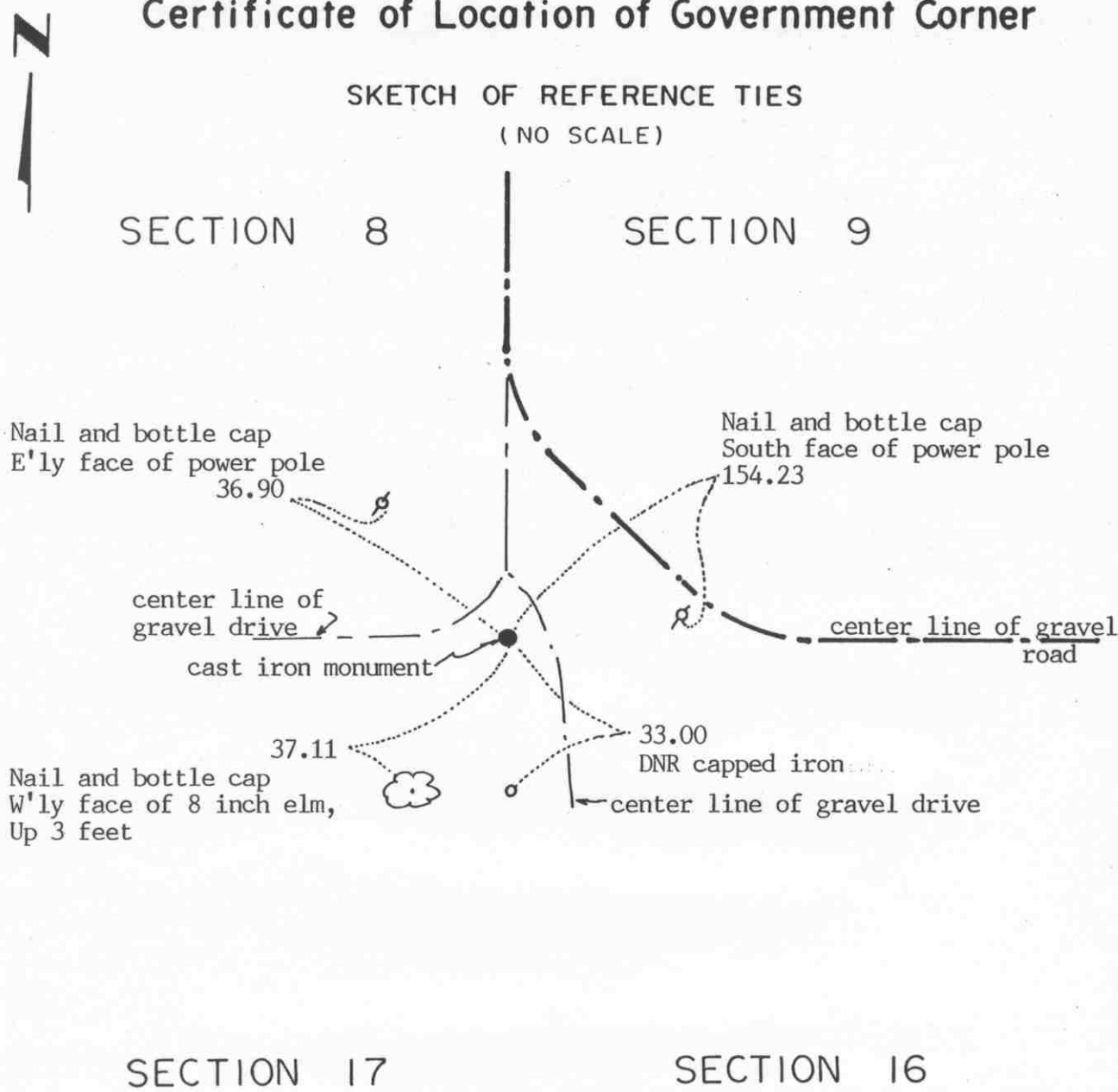
The monument is 0.64 feet north and 6.17 feet east of a lost position for the corner.

NORTHEAST corner, Section 17, Township 114 North, Range 29 West

Certificate of Location of Government Corner

SKETCH OF REFERENCE TIES

(NO SCALE)



Statement of evidence relative to this corner location on sheet 2

I hereby certify that this document was prepared by me or under my direct supervision.

Willard Pellinen

Willard Pellinen
McLeod County Surveyor
License No. 9626

Date August 16, 1993

OFFICE OF THE COUNTY RECORDER MCLEOD COUNTY, MINNESOTA.

I hereby certify that this document was filed in this office at 2 o'clock P.M. on the 5th day of Oct, 1993.

Armen B. Mulder, County Recorder

By _____, Deputy

Document No. 255169

NORTHEAST corner, Section 17, Township 114 North, Range 29 West*Certificate of Location of Government Corner*

July, 1855. A. Runyon of the General Land Office established this corner. He set a post, drove a charred stake, raised mound with trench and pits.

1938. County Highway Department field notes show a stone at this corner.

August, 1971. DNR dug at the P.I. of the center line of the township road and found a stone with a drill hole in it.

March 28, 1978. We also found the stone and took available reference ties.

November 16, 1979. We replaced the stone with a McLeod County cast iron monument and set the stone on the east side of the monument.

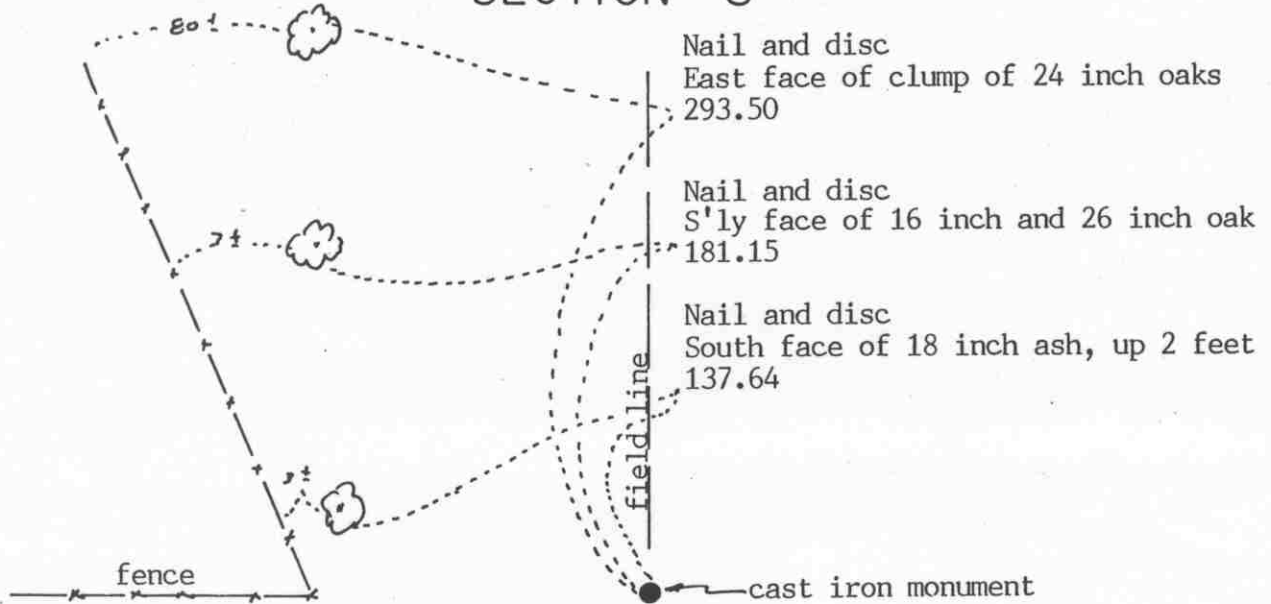
June 28, 1993. No reference ties remaining. We found the monument in good condition and took new ties.

NORTH QUARTER corner, Section 17, Township 114 North, Range 29 West

Certificate of Location of Government Corner

SKETCH OF REFERENCE TIES
(NO SCALE)

SECTION 8



SECTION 17

Statement of evidence relative to this corner location on sheet 2

I hereby certify that this document was prepared by me or under my direct supervision.

Willard Pellinen

Willard Pellinen
McLeod County Surveyor
License No. 9626

Date August 16, 1993

OFFICE OF THE COUNTY RECORDER
MCLEOD COUNTY, MINNESOTA.

I hereby certify that this document was filed in this office at 2 o'clock P.M. on the 5th day of Oct, 1993.

Armen Ostlie Muder, County Recorder

By _____, Deputy

Document No. 255170

NORTH QUARTER corner, Section 17, Township 114 North, Range 29 West

Certificate of Location of Government Corner

July, 1855. A. Runyon of the General Land Office established this corner. He set a post and marked a 12 inch oak for a bearing tree.

1976. DNR found a $1\frac{1}{2}$ inch diameter iron pipe which 20 inches down was wedged between large rocks. Adjoining land owners, Leonard Winterfeldt and Mr. Knicks both agreed this was the quarter corner. DNR measurements show a fence $\frac{1}{4}$ mile east to be within 1 foot of a split between this corner and the north-east corner of Section 17 and within 3.7 feet of being on a straight line.

November 16, 1979. We replaced the iron pipe with a McLeod County cast iron monument and took available reference ties.

June 28, 1993. We found the monument in good condition down 18 inches below the surface and checked the reference ties.

EAST QUARTER corner, Section 18, Township 114 North, Range 29 West

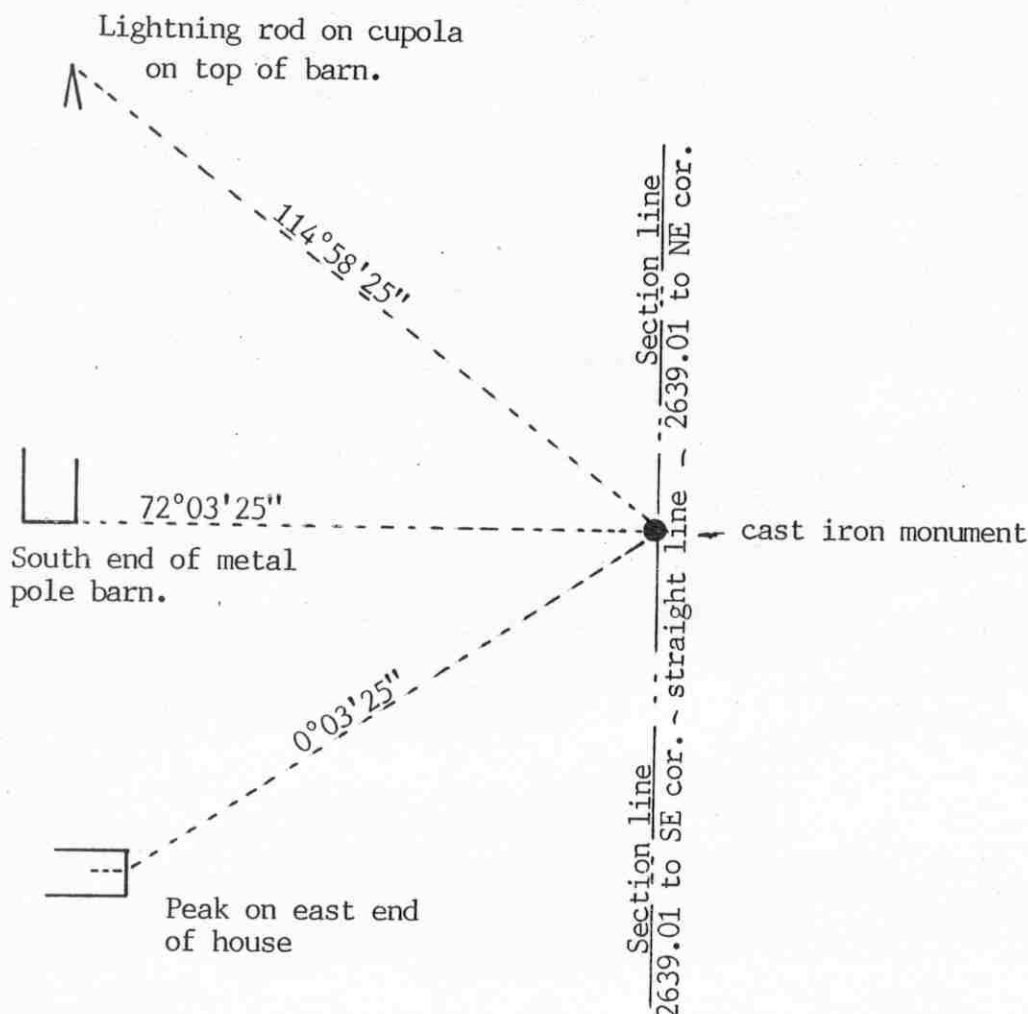
Certificate of Location of Government Corner

SKETCH OF REFERENCE TIES

(NO SCALE)

SECTION 18

SECTION 17



Statement of evidence relative to this corner location on sheet 2

I hereby certify that this document was prepared by me or under my direct supervision.

Willard Pellinen

Willard Pellinen
McLeod County Surveyor
License No. 9626

Date Feb. 8, 1994

OFFICE OF THE COUNTY RECORDER
MCLEOD COUNTY, MINNESOTA.

I hereby certify that this document was filed in this office at 9 o'clock A. M. on the 28th day of March, 1994.

Carmen Estlie Mulder, County Recorder

By _____, Deputy

Document No. 258548

EAST QUARTER corner, Section 18, Township 114 North, Range 29 West

Certificate of Location of Government Corner

July, 1855. A. Runyon of the General Land Office established this corner. He set a post, drove a charred stake, raised a mound of earth with pits and trench and planted osage osage seeds at the southeast corner of the mound.

This corner falls in the middle of a field, no occupation or property lines. Same owner on all sides.

Jan.- Feb., 1985. We measured the east line of Section 18 and set a cast iron monument on line and half way between the southeast corner of Section 18 and the computed northeast corner of Section 18, which falls in the lake. The northeast corner was computed by double proportionate measure between found corners.

January 11, 1994. We found the monument in good condition down 18 inches below the surface of the ground.

NO. 3

MEANDER

corner, Section 18, Township 114 North, Range 29 West

Certificate of Location of Government Corner

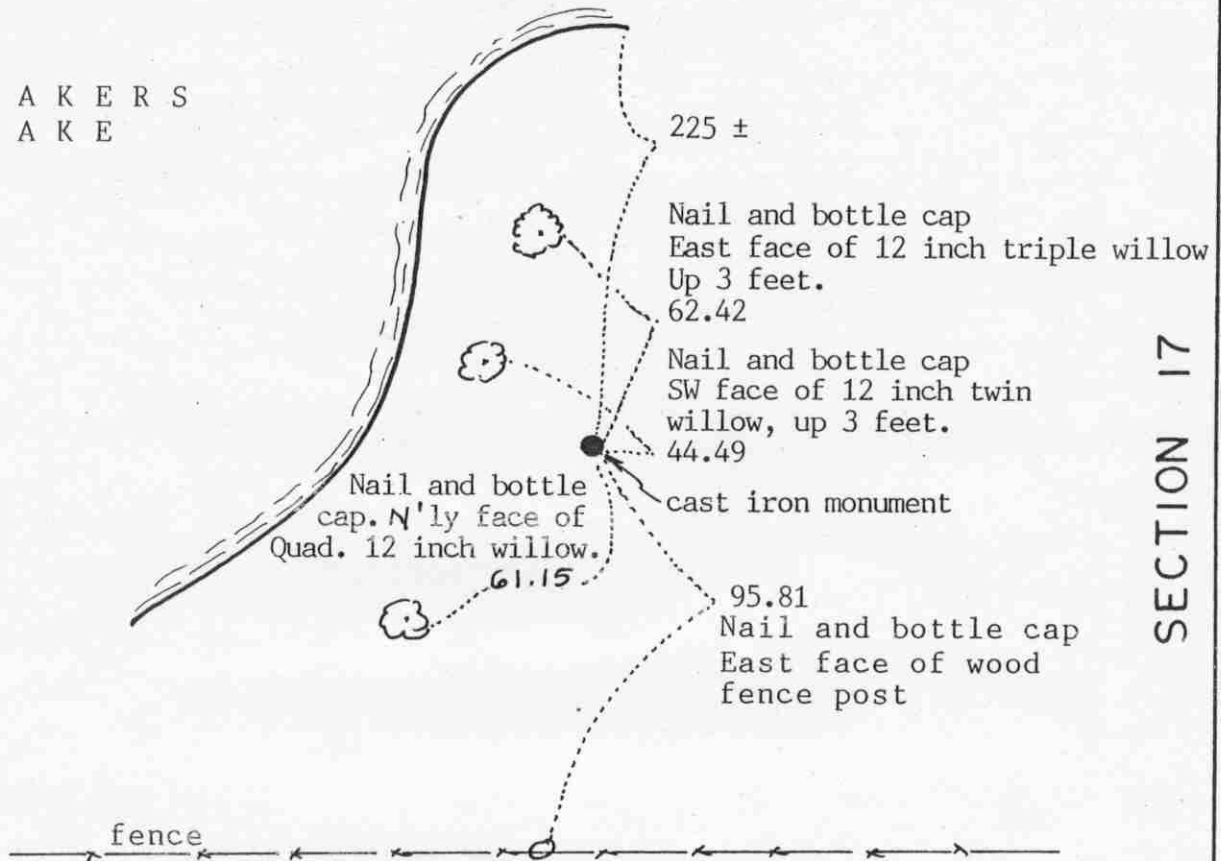
SKETCH OF REFERENCE TIES

(NO SCALE)

B A K E R S
L A K E

SECTION 18

SECTION 17



Statement of evidence relative to this corner location on sheet 2

I hereby certify that this document
was prepared by me or under my
direct supervision.

Willard Pellinen

Willard Pellinen
McLeod County Surveyor
License No. 9626

Date Feb. 9, 1994

OFFICE OF THE COUNTY RECORDER
MCLEOD COUNTY, MINNESOTA.

I hereby certify that this document was filed in this
office at 9 o'clock A.M. on the 28th day
of March, 19 94.

Garmon Otis Mulder, County Recorder

By _____, Deputy

Document No. 258541

MEANDER corner, Section 18, Township 11 1/4 North, Range 29 West

Certificate of Location of Government Corner

July, 1855. A. Runyon of the General Land Office set a post, drove a charred stake, raised mound of earth with trench and pits and planted osage orange seeds at the southeast corner of the mound.

February 1985. We set a $\frac{1}{2}$ inch diameter iron pipe at the computed location of the meander corner, by single proportionate measure between the east quarter corner of Section 18 and the computed location of the northeast corner of Section 18. The northeast corner was computed by double proportionate measure between the found or set government corners. The government distance to the northeast corner is 363 feet and our computed distance is 362.37 feet.

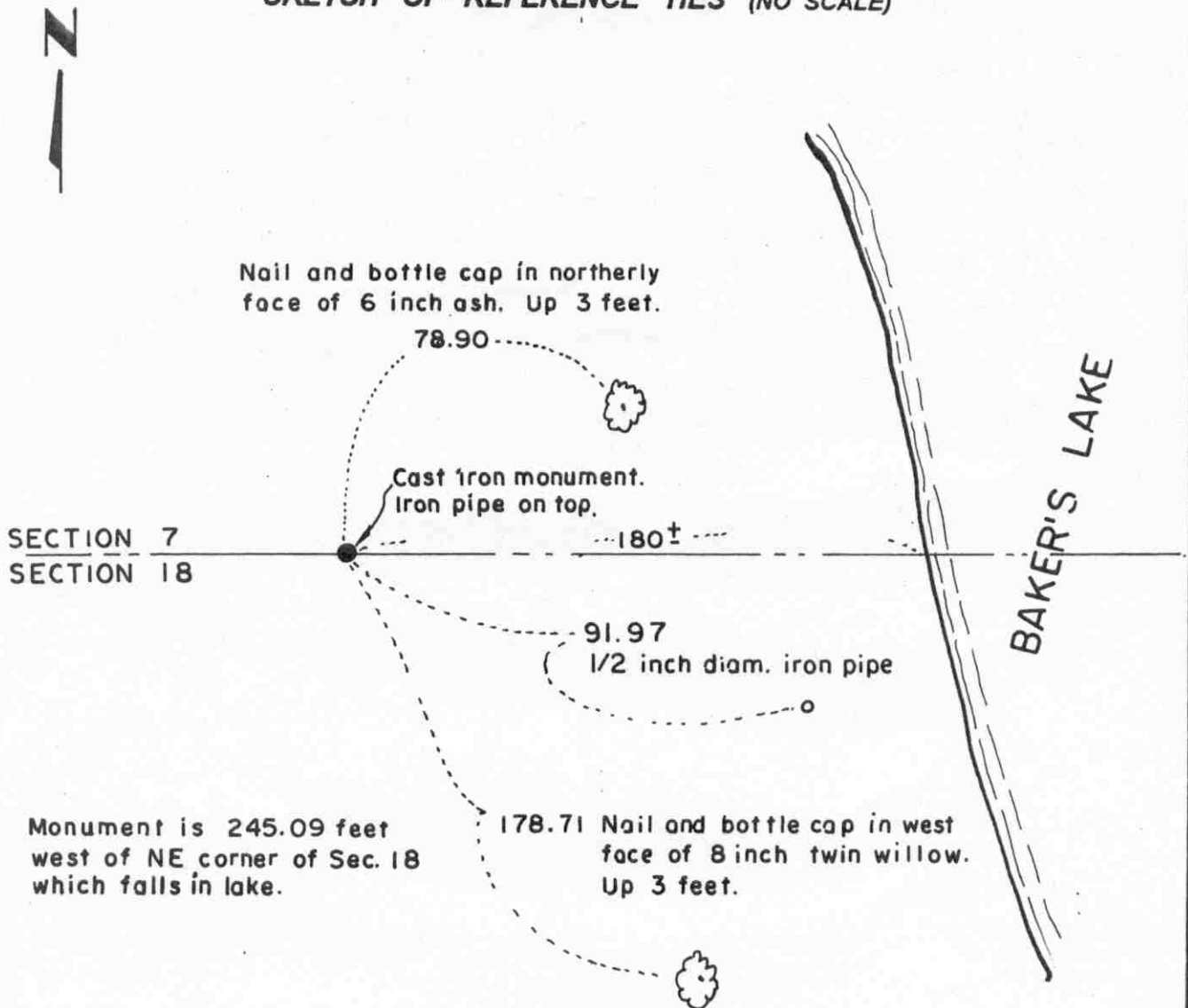
July 8, 1985. We replaced the iron pipe with a McLeod County cast iron monument and took available reference ties.

January 11, 1994. We found the monument in good condition and took new reference ties.

Certificate of Location of Government Corner

Meander _____ corner, Section 18, Township 114 North, Range 29 West

SKETCH OF REFERENCE TIES (NO SCALE)



Statement of evidence relative to this corner location on sheet 2

I hereby certify that this document was prepared by me or under my direct supervision.

Willard Pellinen
Willard Pellinen
McLeod County Surveyor
License No. 9626.

Date Dec. 20, 1995.

OFFICE OF THE COUNTY RECORDER MCLEOD COUNTY, MINNESOTA

I hereby certify that this document was filed in this office at 9 o'clock A. M. on the 9th day of January 19 96.

Carmen Ostlie Mulder, County Recorder

By Charles Engelman, Deputy.

Document No. 270174

Certificate of Location of Government Corner

**Meander Corner, Section 18, Township 114 North, Range 29 West
Along north line of Section 18, west of Baker's Lake.**

1985. We set a cast iron monument at the computed location of Meander Corner No. 4. There is no property line between sections 7 and 18 at this location. We measured Sections 7, 8, 17 and 18 and computed the locations of the section corners which fell in the lake. We set the monument down 1 1/2 feet and set a half inch iron pipe over the monument and took available ties.

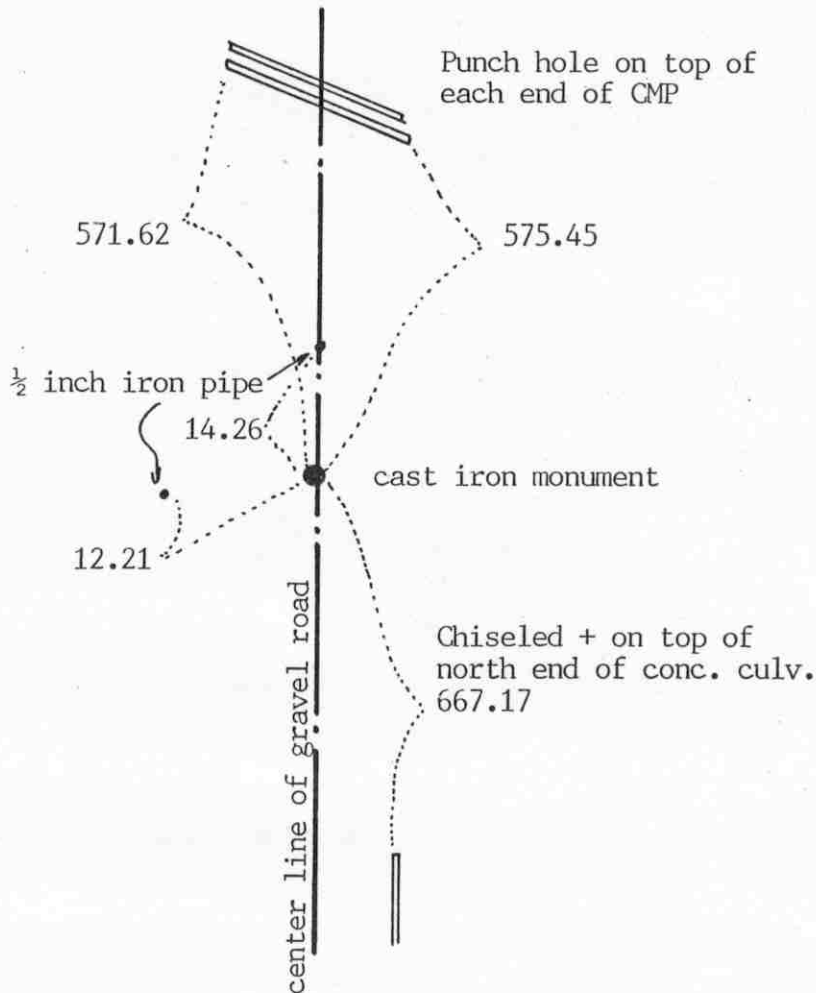
NORTH QUARTER corner, Section 18, Township 114 North, Range 29 West

Certificate of Location of Government Corner

SKETCH OF REFERENCE TIES

(NO SCALE)

SECTION 7



SECTION 18

Statement of evidence relative to this corner location on sheet 2

I hereby certify that this document was prepared by me or under my direct supervision.

Willard Pellinen

Willard Pellinen
McLeod County Surveyor
License No. 9626

Date Feb. 9, 1994

OFFICE OF THE COUNTY RECORDER MCLEOD COUNTY, MINNESOTA.

I hereby certify that this document was filed in this office at 9 o'clock A.M. on the 20th day of March, 1994.

Armen Otis Mulder, County Recorder

By _____, Deputy

Document No. 258542

NORTH QUARTER corner, Section 18, Township 114 North, Range 29 West

Certificate of Location of Government Corner

July, 1855. A. Runyon of the General Land Office established this corner. He set a post, drove a charred stake, raised a mound of earth with trench and pits, and planted osage orange seeds at the southeast corner of the mound.

1976. The DNR set a temporary quarter corner. The set it by doubling distances between fences at the 1/16 lines.

June 10, 1981. We dug for the corner, John Tupa from Hutchinson with a backhoe. We found a rotted wood post down in the original ground. The post was about 2 feet long, 3 inches square, tapered to a point. Post was too rotted to pull out. We took available reference ties. This post was 2.26 feet south of the temporary corner set by the DNR. No property lines running east or west from this corner. This was on the center line of the north-south road.

July 13, 1981. We set a McLeod County cast iron monument at the corner.

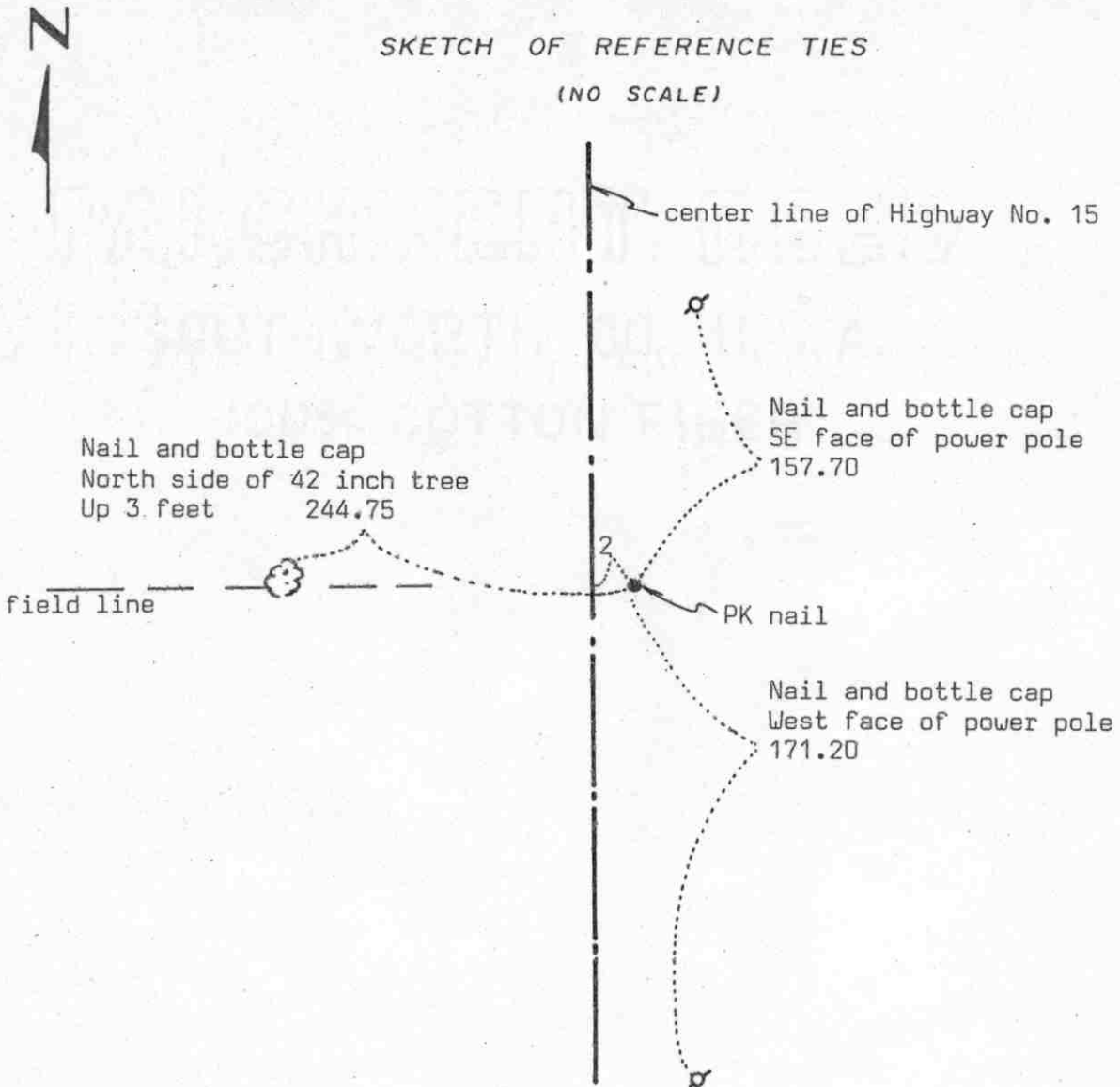
This corner falls 5.66 feet east and 12.91 feet of a lost position for the corner.

January 11, 1994. We found the monument in good condition and checked the reference ties.

NORTHEAST corner, Section 13, Township 114 North, Range 30 West

Certificate of Location of Government Corner

SKETCH OF REFERENCE TIES
(NO SCALE)



Statement of evidence relative to this corner location on sheet 2

I hereby certify that this document was prepared by me or under my direct supervision.

Willard Pellinen

Willard Pellinen
McLeod County Surveyor
License No. 9626

Date 4/5/89

OFFICE OF THE COUNTY RECORDER
MCLEOD COUNTY, MINNESOTA.

I hereby certify that this document was filed in this office at 4 o'clock P.M. on the 20th day of April, 19 89.

Carmen Ostlie, County Recorder

By _____, Deputy

Document No. 227811

NORTHEAST corner, Section 13, Township 114 North, Range 30 West

Certificate of Location of Government Corner

This corner was originally set by the government in 1856. John Ryan set a post, deposited charcoal, dug pits and trench, built mound and planted osage orange seeds at the corners of the mound.

State Highway right of way plans show they found a large flat rock, 2 feet east of P.O.T. station 537+81.0.

In March 1969, McCombs Knutson Associates (Dickman Knutson, County Surveyor) found a spike at station 537+81.0 and they set a PK nail 2 feet east, at the section corner and took reference ties.

In November, 1970, MKA found an iron pipe at the corner.

In December, 1976, we found no trace of the iron pipe so we reset the corner (a PK nail) using the 1969 ties.

On January 31, 1989, we found the PK nail down 2 inches, road had been resurfaced, 2 reference ties remaining checked ok and we took an additional reference tie.

East Quarter corner, Section 13, Township 114 North, Range 30 West.

Certificate of Location of Government Corner

SKETCH OF REFERENCE TIES

(NO SCALE)



SECTION 13, T.114 N., R.30 W.

Nail and bottle cap
NW face of 24 inch ash
Up 5 feet

111.34

Railroad spike

center line of Hwy. No. 15

Nail and bottle cap
S. face of Square wood
fence post

80.33

90.90

Nail and bottle cap
N'ly face of power pole

SECTION 18, T.114 N., R.29 W.

Statement of evidence relative to this corner on sheet 2

I hereby certify that this document was prepared by me or under my direct supervision.

Willard Pellinen

Willard Pellinen
McLeod County Surveyor
License No. 9626.

Date February 2, 1991

OFFICE OF THE COUNTY RECORDER
MCLEOD COUNTY, MINNESOTA.

I hereby certify that this document was filed in this office at 9 o'clock A.M. on the 7th day of February, 1991.

Carmen Ostlie, County Recorder.

By _____ Deputy.

Document No. 237431

EAST QUARTER corner, Section 13, Township 114 North, Range 30 West

Certificate of Location of Government Corner

1855. John Ryan of the General Land Office set a post, deposited charcoal, dug pits and trench, built mound and planted osage orange seeds at the corners of the mound.

State Highway No. 15 right of way map shows the corner to be on the center line station 511+36.9.

March, 1969. McCombs Knutson Associates (Dickman Knutson, county surveyor) set a PK nail at Highway center line station 511+36.9.

December 21, 1970. Knutson took reference ties to the corner.

December 20, 1976. PK nail gone so Knutson reset a PK nail using 1970 reference ties.

November 13, 1983. We found nothing at the corner. We set a railroad spike using the old ties.

January 9, 1990. We found the railroad spike 3 inches below the bituminous surface. We took new reference ties.

February 11, 1990. We measured the east line of Section 13 and found the quarter corner to be within 0.1 ft of being half way between the section corners and within 0.05 ft. of being on a straight line between the section corners.